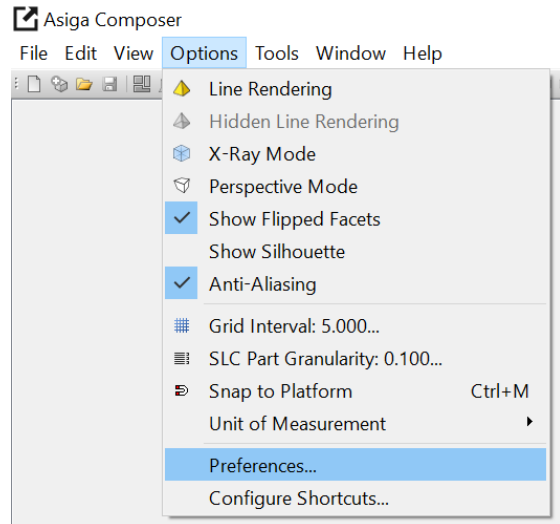



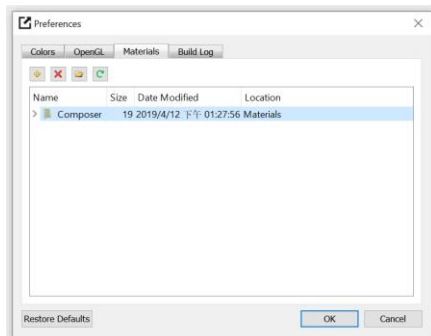
DLP385-Modeling – Gray (D385M-R001GY) Asiga Max UV385

Download ini file: ALW-DLP385-Gray.ini
<https://www.applylabwork.com/support/>

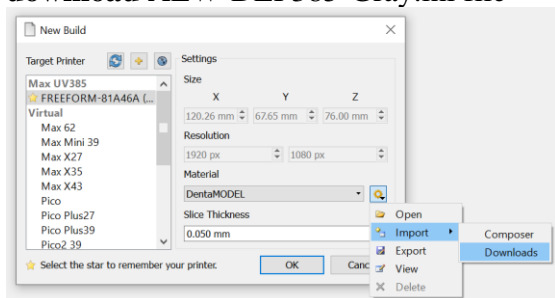
Step 1. Open Composer software, select **Options** from navigation bar and then click **Preferences**.



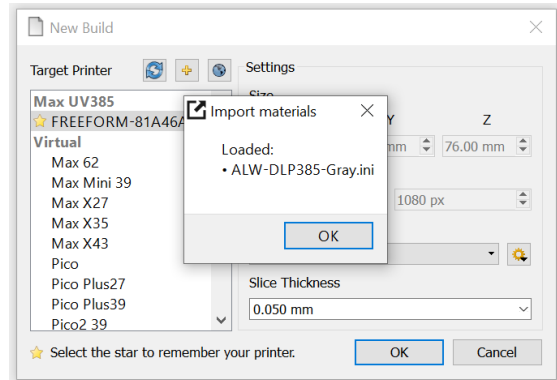
Step 2. Select **Materials** tab and then click  icon, choose the folder where you download our .ini file.



Step 3. Click  icon, select **Import** and click the chosen folder (from Step 2), to **download** ALW-DLP385-Gray.ini file



Step 4. After loading ALW-DLP385-Gray.ini , a dialog box will pop up to confirm the ini file is loaded.



Ready to Print:

Choose **ALW-DLP385-Gray** from **Materials** drop-down menu, and choose appropriate layer thickness for your model [high layer thickness reduces printing time but decreases print quality]

Load 3D model and double check support and orientation are optimal before print.

Washing

Submerge print in clean IPA bath for **5 minutes**, blow off excess IPA, set print in a shaded airy place to dry before curing.

Curing

Asiga Flash 10-30 minutes

Optimal rigidity can be achieved with 30 minutes, reduced curing time will provide more material flexibility.

Storage and Handling

Don't leave resin in the tray for prolong period of time without printing. Filter resin in case of fail prints.

Note:

(1) This resin is formulated on **Asiga Max UV385**.

(2) Slight pigment settlement is normal. Gently mix remaining resin in resin tray with **rubber spatula** for color evenness.