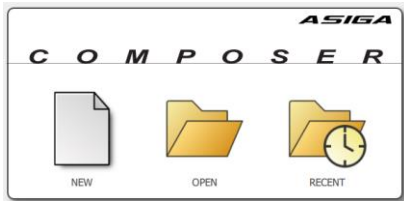


DLP385-Prototype Engineering Heat Gray (D385PT-HE001GY) Asiga Max UV385

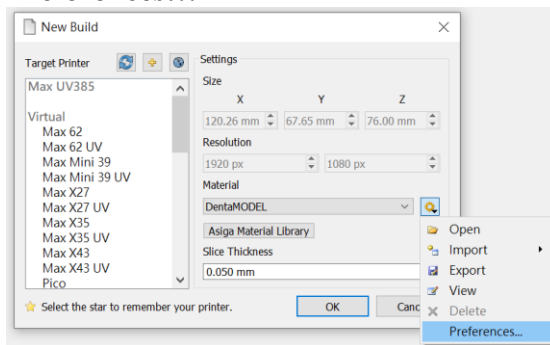
Download ini file


<https://www.applylabwork.com/support/>

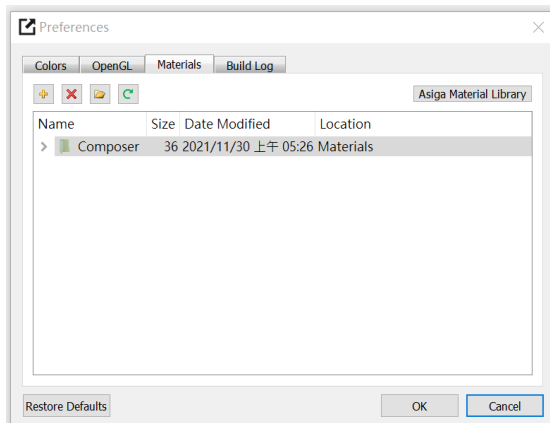
Step 1. Open Composer software, select **New**.



Step 2. Click  icon, and click **Preferences...**



Step 3. Click  icon, and choose the folder where you download our .ini file, click **OK**.



Ready to Print

Choose **ALW-D385-Heat** from **Material** drop-down menu, and choose appropriate layer thickness for your model [high layer thickness reduces printing time but decreases print quality]

Load 3D model and double check support and orientation are optimal before print.

Washing

Submerge print in clean IPA bath for **5 minutes**, blow off excess IPA, set print in a shaded airy place to dry before curing [30 minutes].

Curing Steps

1. Asiga Flash 30 minutes
2. Thermal-curing, **oven 160°C 90 minutes**

Photo-curing (Flash) provides 95.5°C/ 203.9°F HDT.

Step 2: oven thermal-curing enable material to increase HDT to 175°C/ 347°F.

Storage and Handling

- Don't leave resin in the tray for more than 3 days without printing.
- Not accessible to Children
- Filter resin in case of fail prints.
- Slight pigment settlement is normal. Gently mix remaining resin in resin tray with **rubber spatula** for color evenness.

Note:

This resin is formulated on **Asiga Max UV385**.