

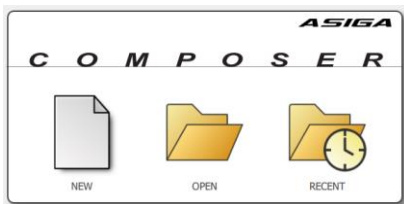
DLP385-Prototype Engineering Expert Gray (D385PT-EX001GY) Asiga Max UV385

Formulated on **Asiga Max UV385**.
Verify printer model for best print experience.

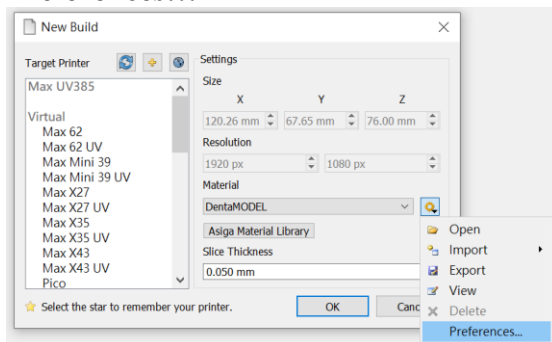
Download ini file


<https://www.applylabwork.com/support/>

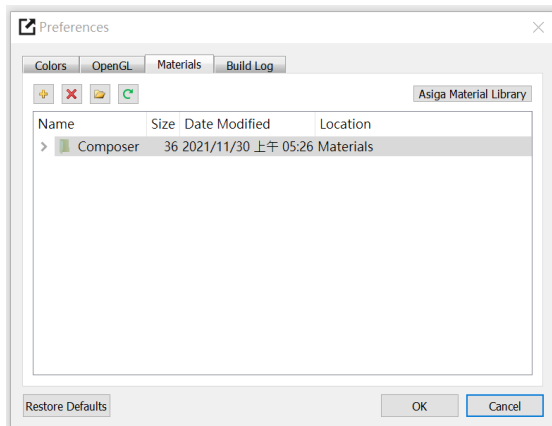
Step 1. Open Composer software, select **NEW**.



Step 2. Click  icon, and click **Preferences...**

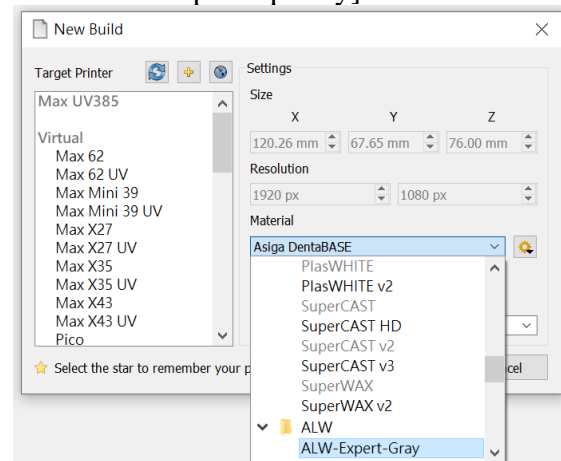


Step 3. Click  icon, and choose the folder where you download our .ini file, click **OK**.



Ready to Print

Click **NEW** and choose **ALW-Expert-Gray** from **Material** drop-down menu, and choose appropriate layer thickness for your model
[high layer thickness reduces printing time but decreases print quality]



Load 3D model and double check support and orientation are optimal before print.

Washing

Submerge print in clean IPA bath for **5 minutes**, blow off excess IPA, set print in a shaded airy place to dry before curing.

Curing

Asiga Flash 5 - 30 minutes

Optimal rigidity can be achieved with 30 minutes. Reduced curing time will provide more material flexibility.

Storage and Handling

- Don't leave resin idle in the tray for more than 3 days.
- Not accessible to children
- Filter resin in case of fail prints.
- Slight pigment settlement is normal.
(use **rubber spatula** gently mix remaining resin in the tray for color evenness.)